



What is community energy and what could it do for St Albans District?

7.35pm Introduction to the St Albans Step 1 Capacity-Building Project

- Nicola Ward, St Albans District Council

7.45pm Introduction to community energy

- Kirsty Shanahan, CEP

8.15pm Walking the talk: a view from Grand Union Community Energy (GUCE)

- Sarah Burgess, Director, GUCE

8.30pm Your views – can we make community energy work in St Albans District?



What is Community Energy?

- People work together to reduce energy use and generate decarbonised heat and power and bring positive outcomes for the local community.
- Local people developing and investing in their own renewable energy projects.
- Understanding local energy needs and helping their communities to save energy and money.
- Offering skills, training and job opportunities.
- Raising awareness of the value of locally led action on climate change.



Our recipe for community capacity building

Community Energy Strategy

We work closely with Local Authorities and existing community groups to understand how developed the community energy sector is in an area and what is needed to grow its scale and impact.

Identifying potential for energy advice services to be supported to grow.

Capacity Building

A structured programme that includes expert community energy training, skills development mentoring, business planning, governance and fundraising support.

We create the foundations of a local community energy network, bringing together and developing skills and knowledge of action groups, councils, and local experts.

Development of energy advice service capability.

Energy Planning

Our community led decarbonisation plans complement LAEPs and position local communities to deliver well informed, clear, actionable steps in the transition to net zero.

Energy advice supports gathering data and community engagement.

Powering Down

Community scale mobilisation of community energy champions who provide trusted and impartial local advice on energy and cost savings.

Energy advice supports the development of community energy groups, development of local retrofit markets and creation of green jobs.

Powering Up

Development support for advanced groups working on heat networks, renewable energy and low carbon transport.

These groups have usually started off with building local presence and network through energy advice.

Our Impact

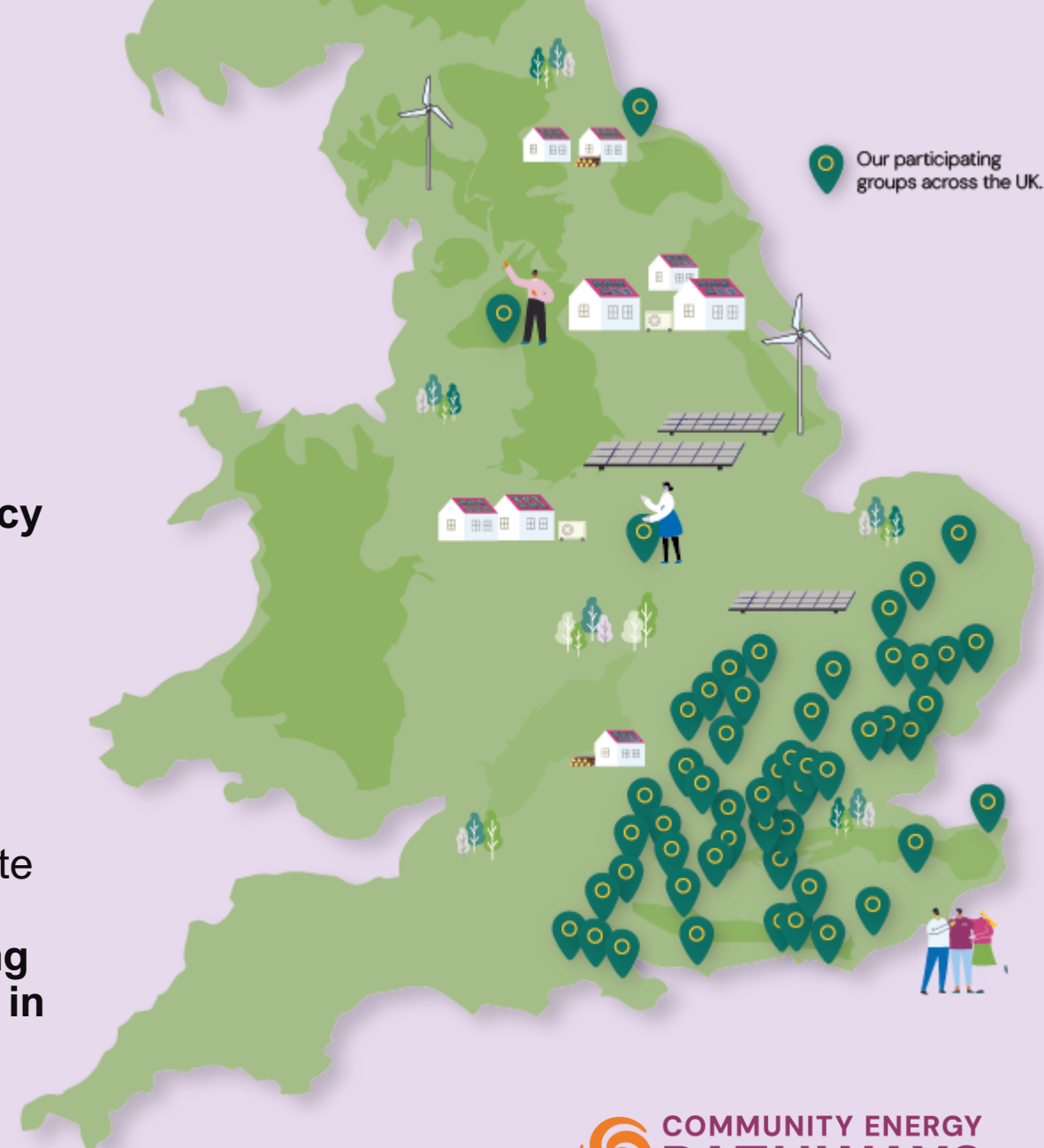
Founded in 2013, CEP now supports


**50 Community Energy Groups in
15 Local Authorities**

On average, we provide over **30 days intensive consultancy** at a local level for each CE group that we support.

Case study

From 2012, we established twelve new community energy groups across Sussex. Today, those groups own and operate over **120 renewable energy projects**, employ **25 full time staff**, support a region wide **fuel poverty network reaching over 3,000 homes a year**, secured **more than £12 million in equity** with over **1,400 local shareholders** keeping their investments local and in the local economy.





Ouse Valley Energy Services Coop (OVESCO)

- Harveys Brewery – rooftop PV 98kW
- Sunny Solar Schools
- Ouse Valley Solar Farm – 17 MW with no subsidy!
- Meadow Blue Solar Farm – 5MW
- Get Bikery – electric cargo bike hire/delivery
- 2m Climate Action Fund
- Energy advice reaching 2000 homes/yr



How community energy works in practice

Site Identification and
Desktop Assessment

Stakeholder Identification
and informal Expressions
of Interest

Technical Survey and
Feasibility Study

Expressions of Interest or
Memoranda of
Understanding

Invitation to Tender Process

Financial Modelling

Community Share Offer

Power Purchase
Agreement and Lease
Form E (Schools)

Installation

Supply of Electricity
& Billing

Interest paid to
community investors

A short history of community energy in St Albans

Transition St Albans – energy efficiency
and decarbonisation work 2013-2014

Sustainable St Albans - thermal imaging
camera lending scheme

Open Eco-Home events annually
promoting home energy efficiency and
retrofit

St Albans District
Council declares
climate
emergency

Council
commissions
energy use
audits on its
own buildings

Council gets
funding for
Greener Together
Network project

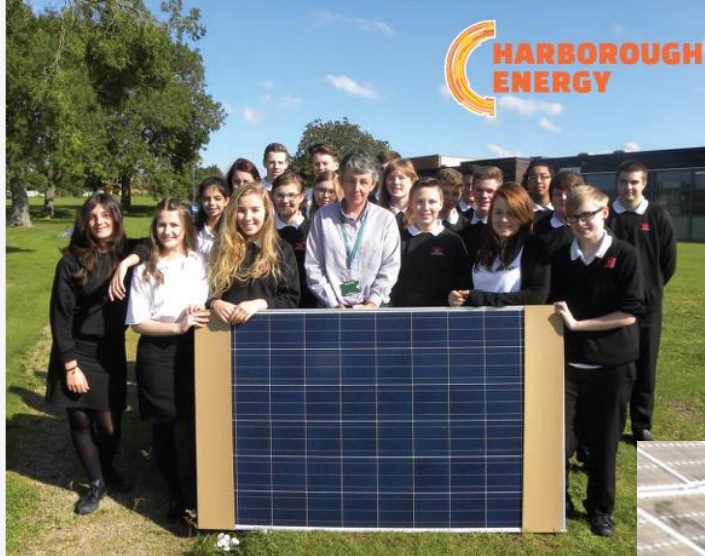
Council
commissions solar
PV feasibility
studies

Council puts
solar PV on a
number of its
own buildings



St Albans DC Solar PV Potential

- **Westminster Lodge Leisure Centre**
- **Batchwood Golf & Sports Centre**
- **Cotlandswick Leisure Centre**
- **Sandridge Gate Business Centre**
- **Alban Arena**
- **Drovers Road Car Park**
- **Abbey View Pavilion**
- **Harpenden Leisure Centre**



Harborough Solar One Limited

Local energy generation for the benefit
of our wider community

SHARE OFFER DOCUMENT



The Community Shares Standard Mark is awarded by the Community Shares Unit to offers that meet national standards of good practice.
For more information about community shares, the Community Shares Standard Mark and the Community Shares Unit go to: communityshares.org.uk



Harborough Solar One | Project 2

Local energy generation for the benefit
of our wider community



- Offer opens - 8th Aug 2018
- Offers closes - 30th Sept 2018
- Min. investment - £250 (local - £100)
- Max. investment - £20,000
- Min. target - £40,000
- Max. target - £149,700
- Target Return - 4%

SHARE OFFER DOCUMENT

August 2018 / v1.1

Other potential sites

- Industrial estates and premises – working with organisations, businesses, landlords and tenants
- Schools – working with HCC
- Shared ownership with commercial developers



What kind of talents does a group need to deliver community energy projects?

Leadership and people management

Project management

Communication & people

Technical knowledge – or know where to find it

Fundraising

Administration

Enthusiasm, dedication and passion

And equal parts idealism and realism!

