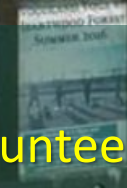
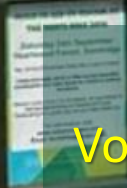


WELCOME


WOODLAND
TRUST

Heartwood Forest



woodlandtrust.org.uk/heartwood

Heartwood Forest Creating the habitats

Tim Wright

Volunteer with the Woodland Trust at Heartwood



We create

Expanding native woodland to
benefit nature, climate and
people



We protect

Lobbying to protect woods and
trees, loss of habitat, natural
heritage



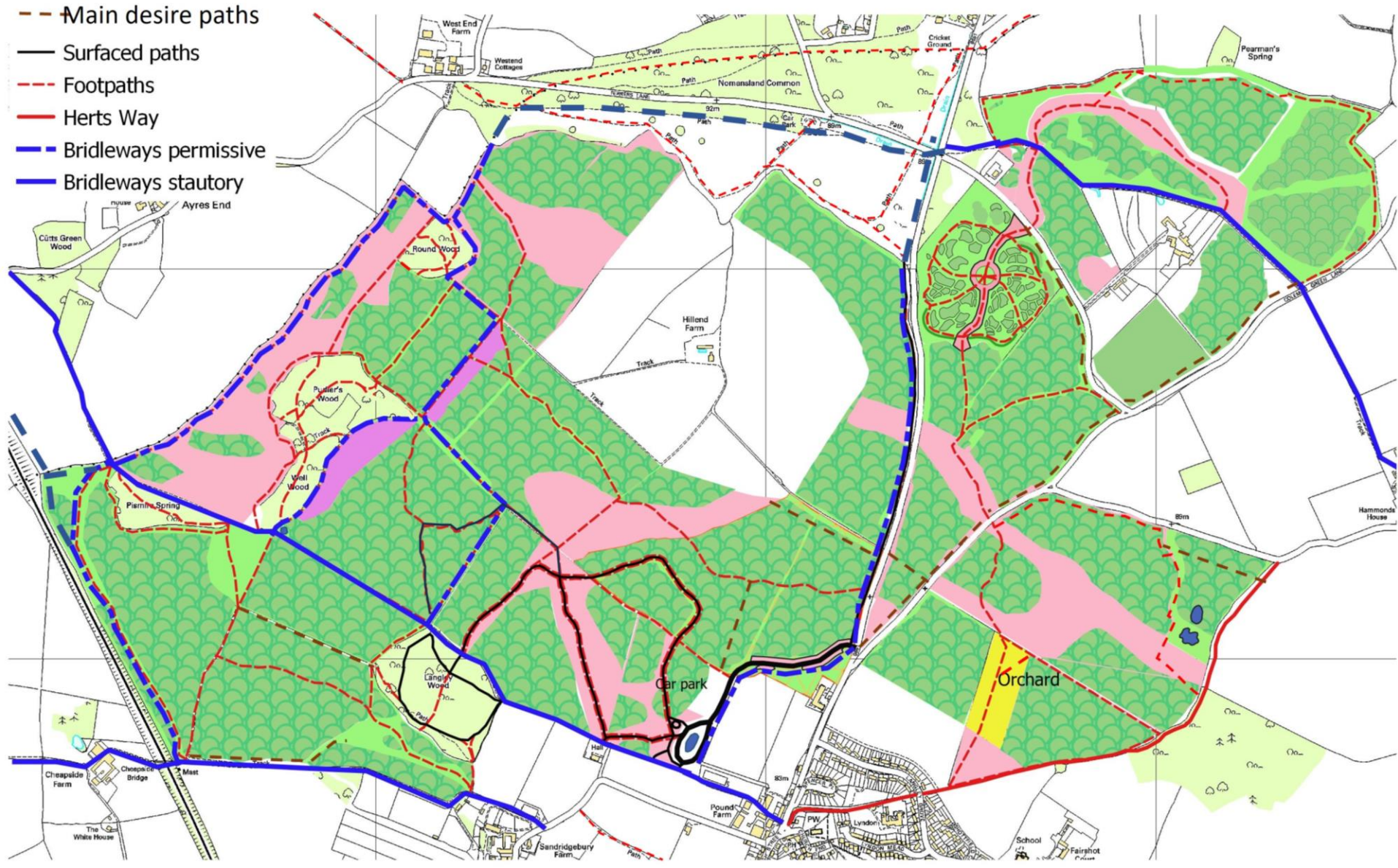
We restore

Bringing damaged ancient
woods back to life, increasing
resilience

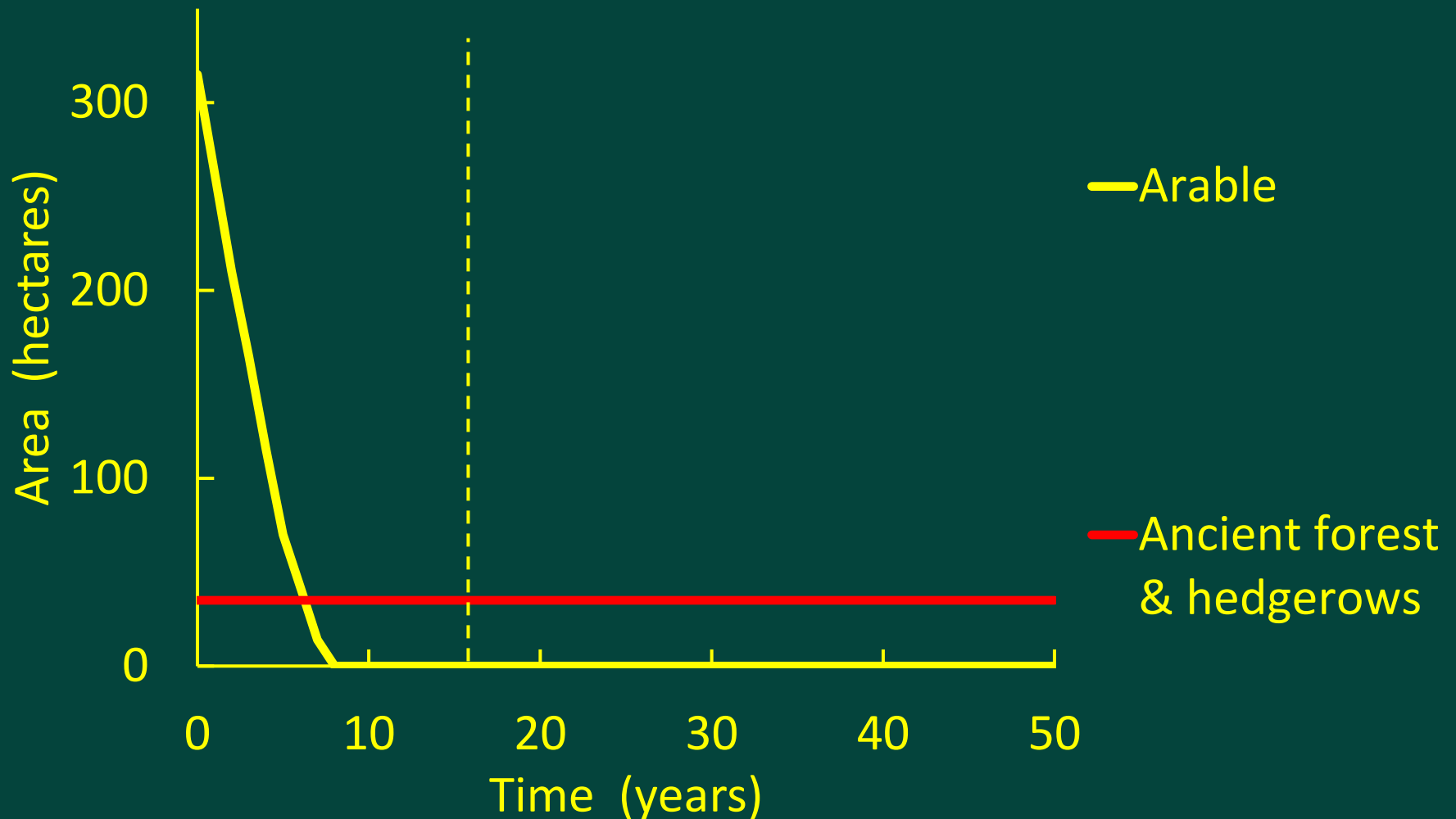
Facts about Heartwood

- 350 hectares
- Owned and managed by the Woodland Trust
- 600,000 trees planted between Nov 2009 and Mar 2018
- All UK-native species
- 20km of footpaths or bridleways
- Open 24/7, no entry or parking charges (car park closes at dusk)
- Around 200,000 people visits each year

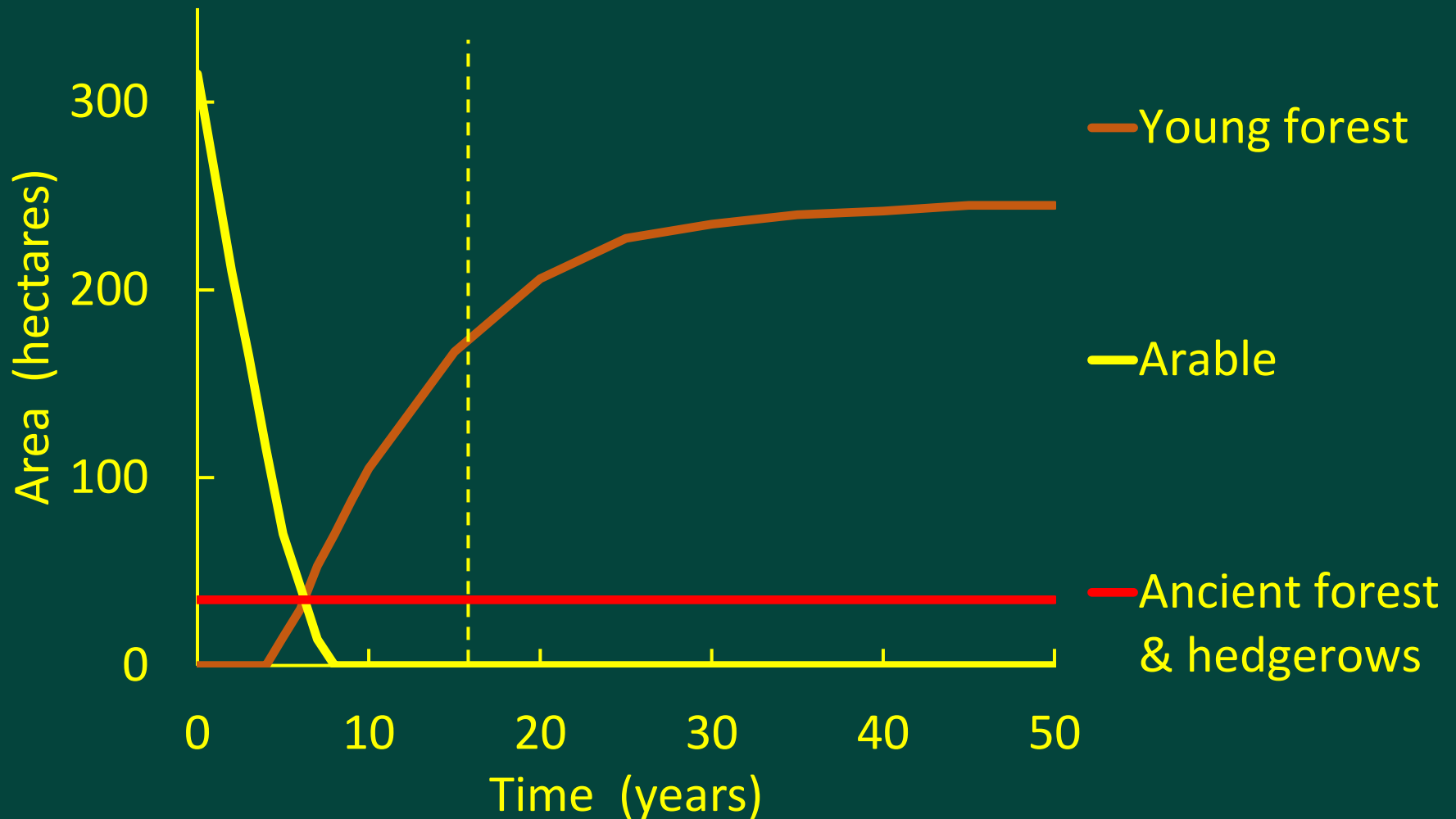
A mosaic of different habitats



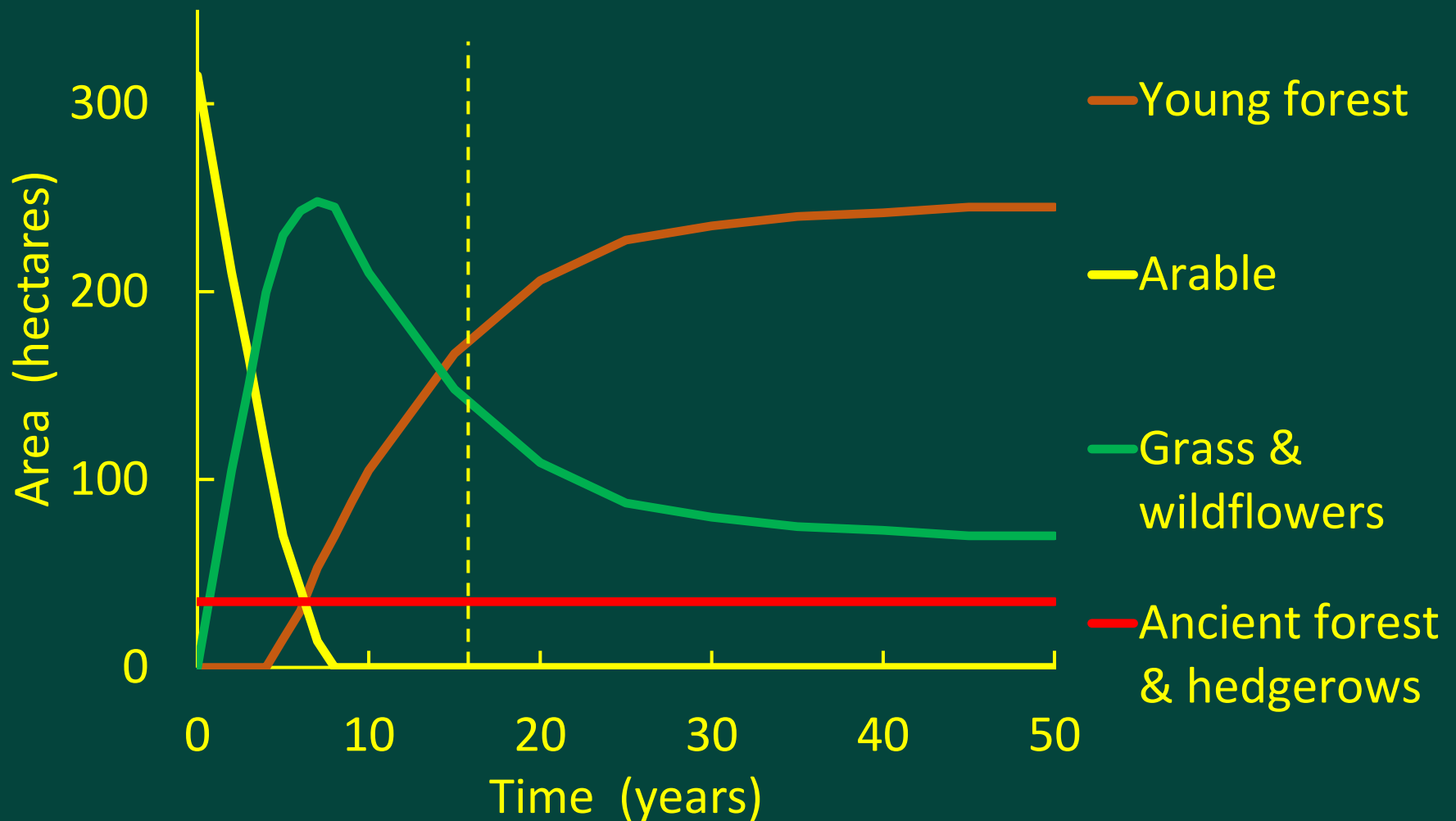
Heartwood's changing vegetation



Heartwood's changing vegetation



Heartwood's changing vegetation



Wilding

- Not the 'do nothing' approach to wilding
- Managed to create a range of habitats to increase biodiversity
- And it's working – biodiversity has increased
 - Expert wildlife monitors
- But ...
 - to most people, it's a recreational amenity
 - balancing amenity value and protecting wildlife

Types of wildlife being monitored

Fungi

Lichens and Bryophytes

Flowers and Grasses

Butterflies and Moths

Insects

Reptiles and Amphibians

Small mammals

Bats

Large mammals

Birds



Ancient woodland

- coppicing
- protecting ground flora



New woodland

- coppicing
- scalloping



Wildflower meadows

- mowing regime
- harrowing

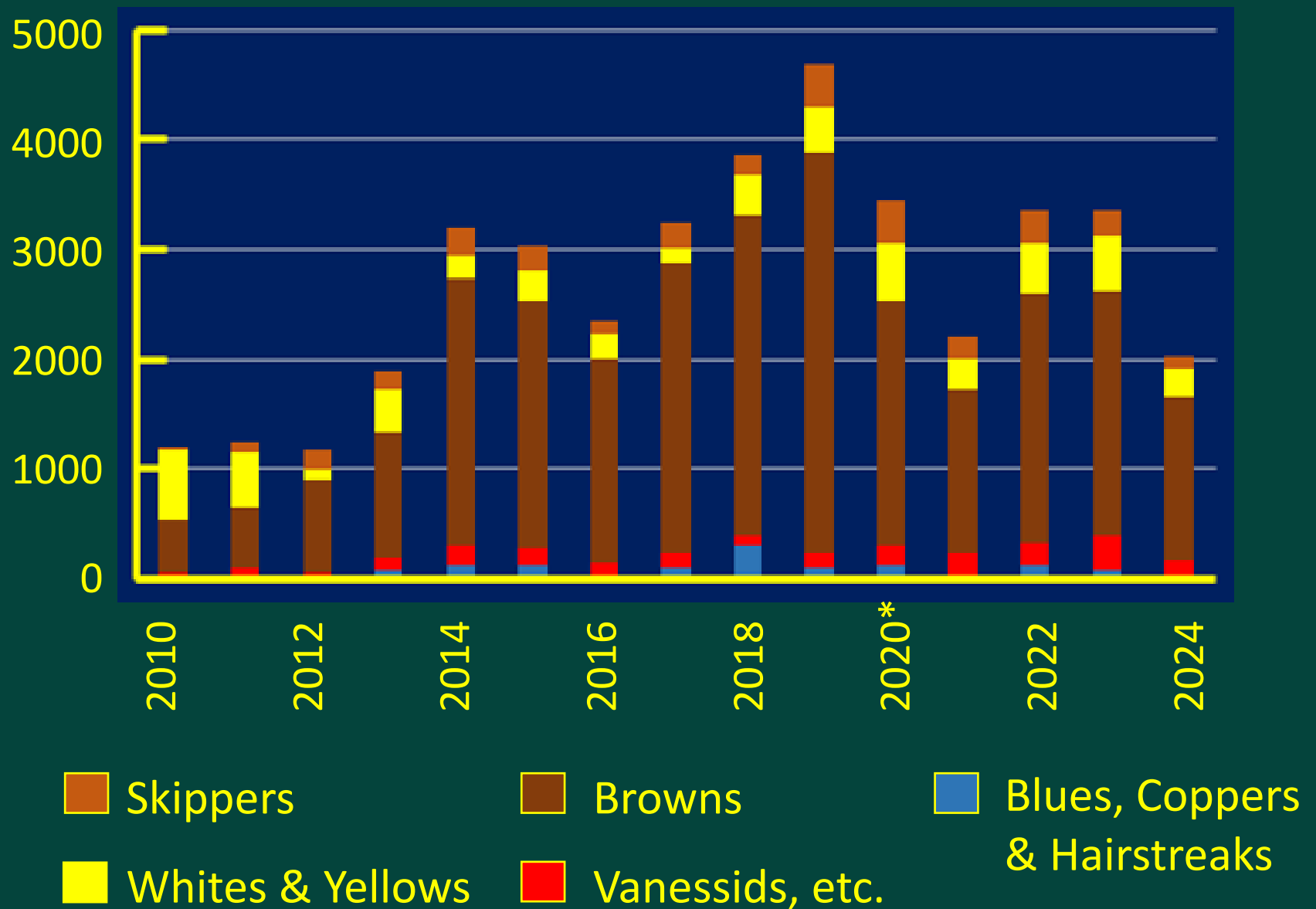


Hedgerows

- hedge laying
- cutting regime



Butterfly numbers – Andrew Steele



Create the habitats ...

- Hedgerows
- Grassland
- Wildflower meadows
- Wetland
- Orchard
- Thickets
- Glades
- Ancient woodland
- New woodland
- Scrub

... and they will come

